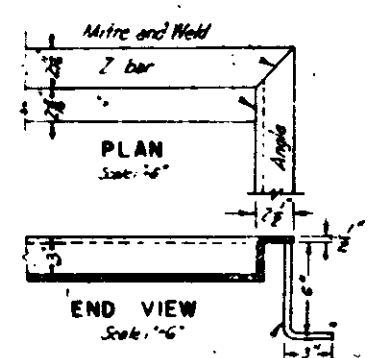
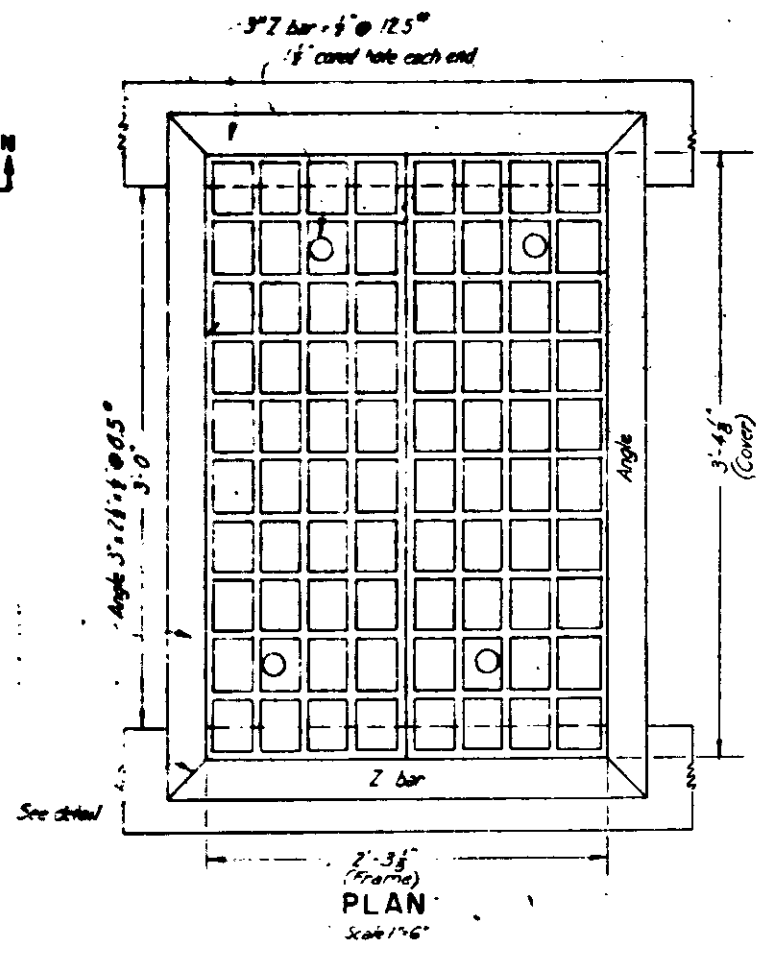
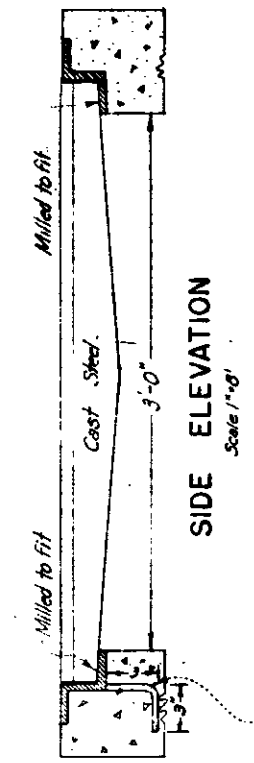


NOTE: The material and finish shall conform to the specifications applicable hereto.
Cover shall fit in other position.
Frame and Cover shall be painted.
Frame and Cover shall be gray.
Cast iron.

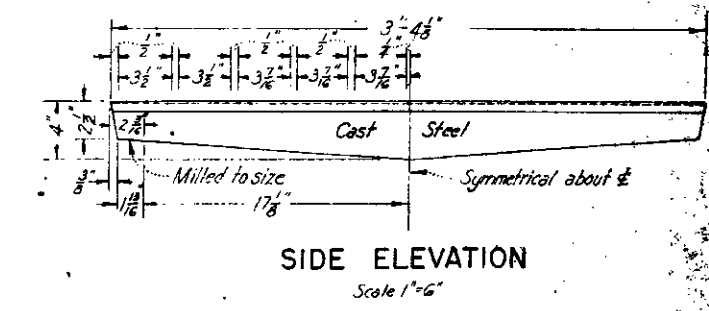
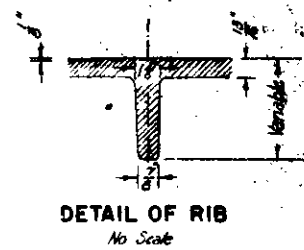
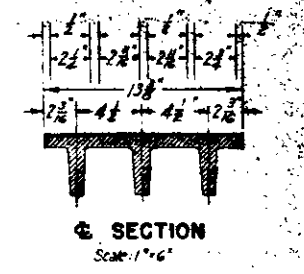
DETAILS - SIDEWALK MANHOLE FRAME AND COVER
S. & C. As shown



Anchors 1/2" Steel Rod full welded to angle at corners and center of frame.



Anchors 1/2" Steel Rod full welded to Z bars at corners and center of frame.

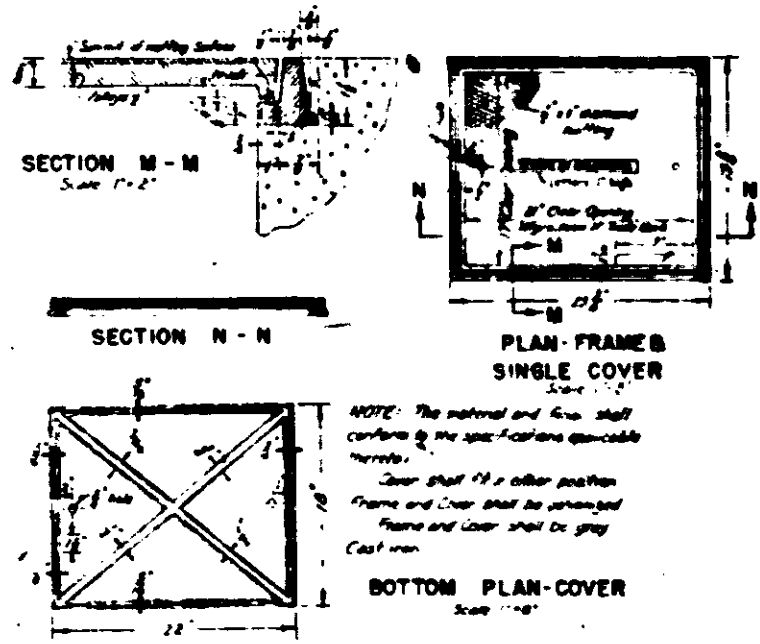


STREET MANHOLE FRAME AND COVER
Scale: As shown

MISCELLANEOUS STRUCTURE DETAILS

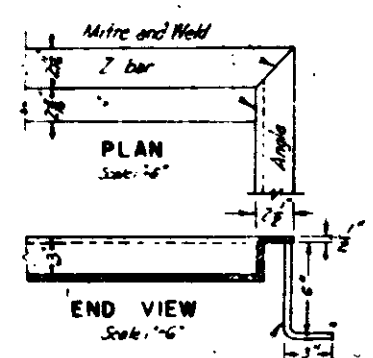
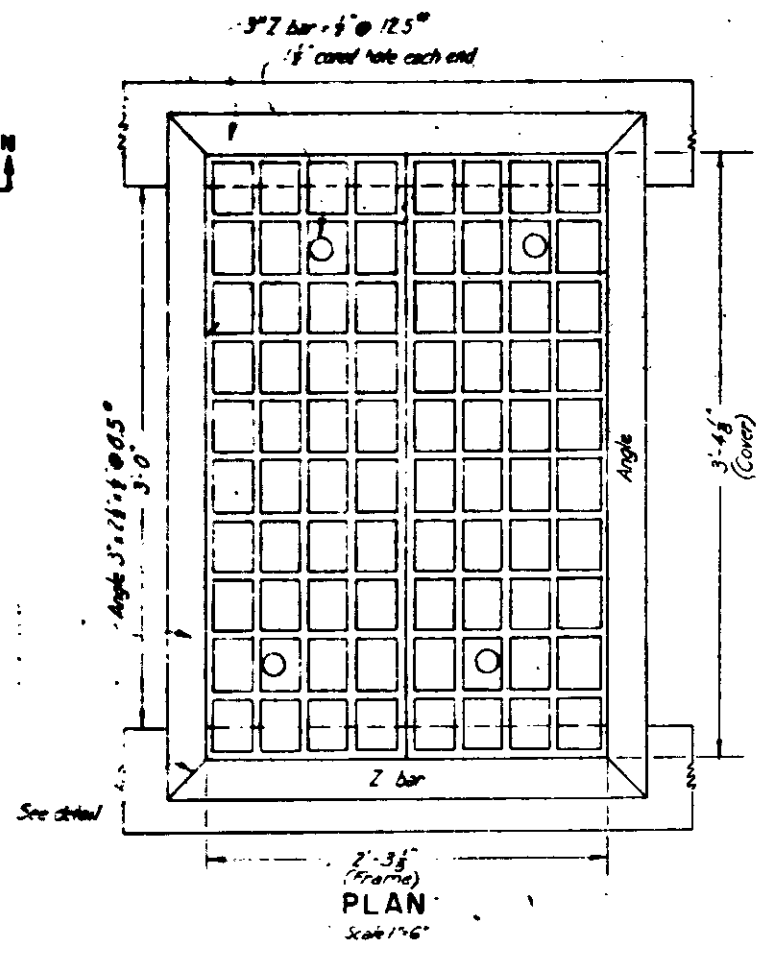
SCALE AS SHOWN

Trans. 42, R. 10/10/10
 Checked: M. J. C. 10/10/10

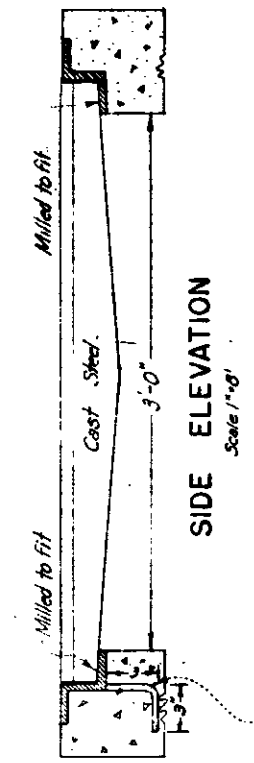


NOTE: The material and finish shall conform to the specifications applicable hereto.
Cover shall fit in other position.
Frame and Cover shall be painted.
Frame and Cover shall be gray.
Cast iron.

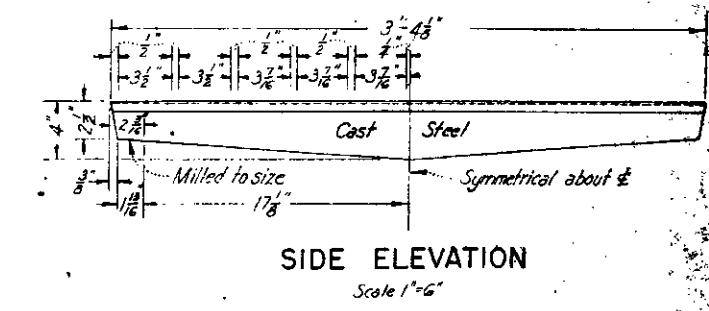
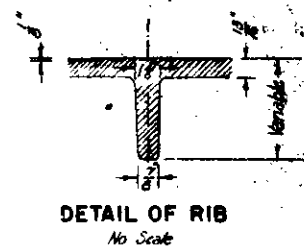
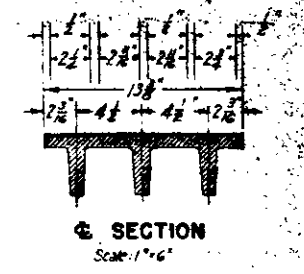
DETAILS - SIDEWALK MANHOLE FRAME AND COVER
S. & C. As shown



Anchors 1/2" Steel Rod full welded to angle at corners and center of frame.



Anchors 1/2" Steel Rod full welded to Z bars at corners and center of frame.



STREET MANHOLE FRAME AND COVER
Scale: As shown

MISCELLANEOUS STRUCTURE DETAILS

SCALE AS SHOWN

Trans. & Eng. Dept.
 Checked: M. J. ...
 Date: ...